

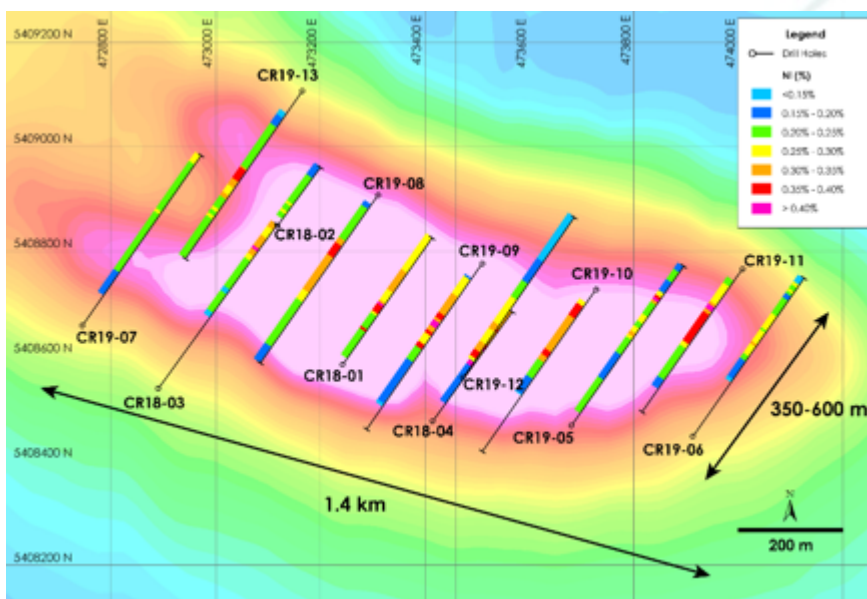
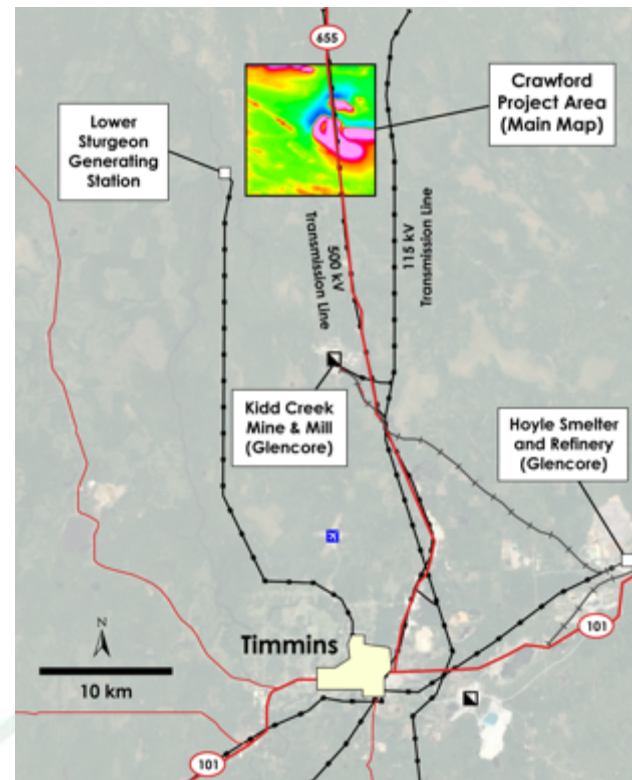


# CANADA NICKEL COMPANY

## DELIVERING THE NEXT GENERATION OF NICKEL-COBALT SULPHIDE PROJECTS

### Advancing the Crawford Nickel – Cobalt Sulphide Discovery

- World class jurisdiction - Ontario
- Established Timmins mining camp with 100-year history of mining
- Adjacent to all major infrastructure
- Active permitting and development of mines



**Mineralization Defined**  
**1.4 km long**  
**X 350 – 600m wide**  
**X 500 m deep**

**Open along strike,**  
**at depth,**  
**and to the north**

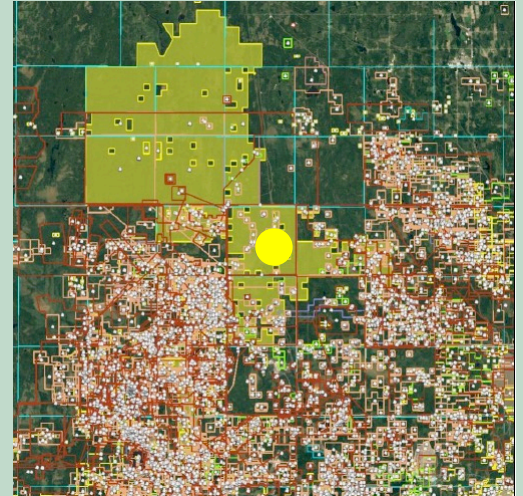


**CANADA NICKEL**  
COMPANY

TSX-V: CNC (pending approval)  
Pro forma (post transaction)  
Cash: \$4.5 MM  
Shares O/S: 55 MM

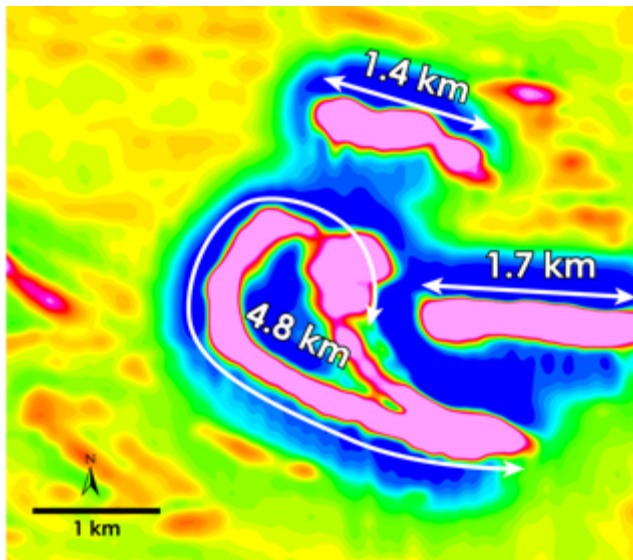
## Why Crawford undiscovered until now?

- A few drill holes by Inco in 1960s in each large anomaly
- Minimal exploration in 1970/1980s
- Land owned by forestry company for several decades until acquired by Noble in 2011



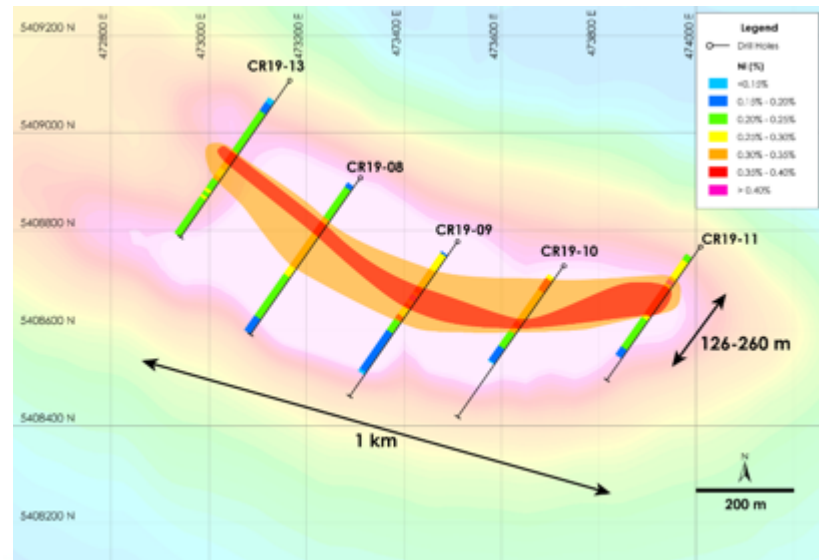
*Noble Minerals Project 81 & Surroundings*

**Large Scale Potential**  
~8 km strike length



*Crawford Ni-Co Project 1<sup>st</sup> Vertical Derivative*

**Higher Grade Core**  
> 1km long by >126 m wide



*Crawford Ni-Co Project Plan View*

### Board

David Smith  
John Leddy  
Mike Cox  
Russell Starr

### Management

Mark Selby, Chairman, CEO  
Steve Balch, VP Exploration  
Jessie Liu-Ernsting, VP Corp Dev & IR  
Robert Suttie, CFO